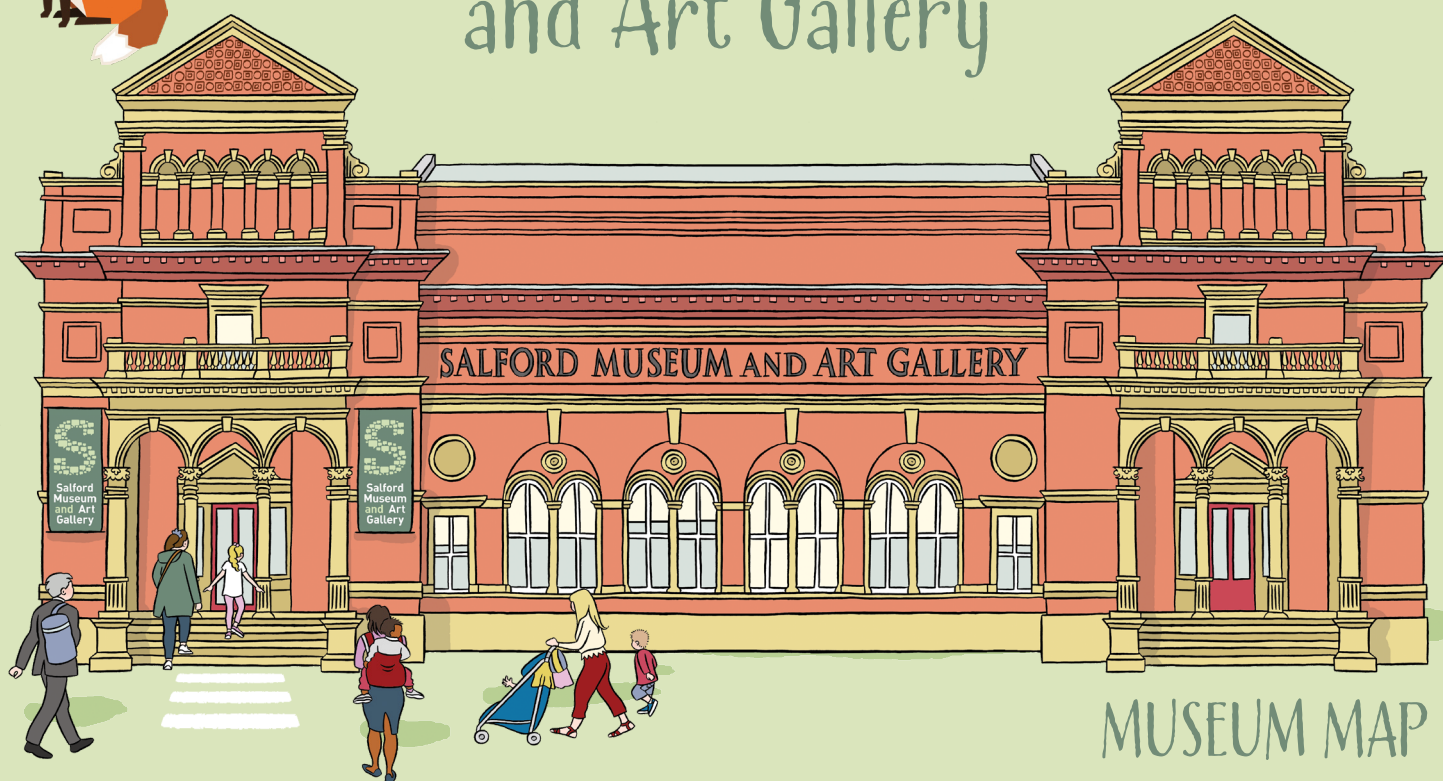


Discover Peel Park
behind the Museum!



Salford
Museum
and Art
Gallery

Explore Salford Museum and Art Gallery




The Galleries

- 1 Lark Hill Place is an atmospheric re-creation of a typical northern street during Victorian times.
- 2 Victorian Gallery is hung to replicate the galleries of the Victorian era, packed with paintings, sculpture and objects from the museum collection.
- 3 East Wing has a changing programme of contemporary art exhibitions.
- 4 North Gallery has a display of the museum's Pilkington's Ceramic collection and a programme of temporary exhibitions, mainly by artists from the North.
- 5 Langworthy Gallery has a programme of temporary exhibitions from the museum collection.

• Local History Library – to book an appointment visit:
salfordmuseum.com/explore/local-history-library/

• Park Gallery

 pinccollege.co.uk/creative-learning-studios/salford-art-gallery/

About your visit

- Baby changing facilities can be found in the ladies toilet and also in the accessible toilet.
- If you need access to the accessible toilet, please ask at reception for the key.
- You are welcome to breastfeed in our galleries and café.
- Our galleries have different temperatures, smells and lighting levels.
- If you find it too noisy, you can wear your ear defenders or borrow a pair from Reception.
- If you would benefit from a quieter visit, please call in advance on 0161 778 0800.



Supported by The John S Cohen Foundation and The Granada Foundation

The Granada
Foundation

First Floor



5 Langworthy Gallery

Stairs



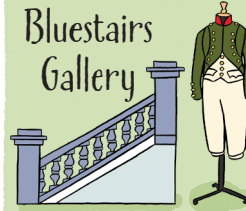
"By Hand" Shop



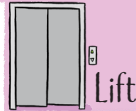
4 North Gallery



Bluestairs Gallery



Learning Room



Lift

2 Victorian Gallery

Activities



3 East Wing



Ground Floor



Café



Shop

Stairs



Reception



Entrance

Park Gallery

Specialist Colleges
for Creative
Education



Toilets



Toilets



Lift

Toilets



Stairs



Local History Library



1 Lark Hill Place

Activities

Dressing
up

